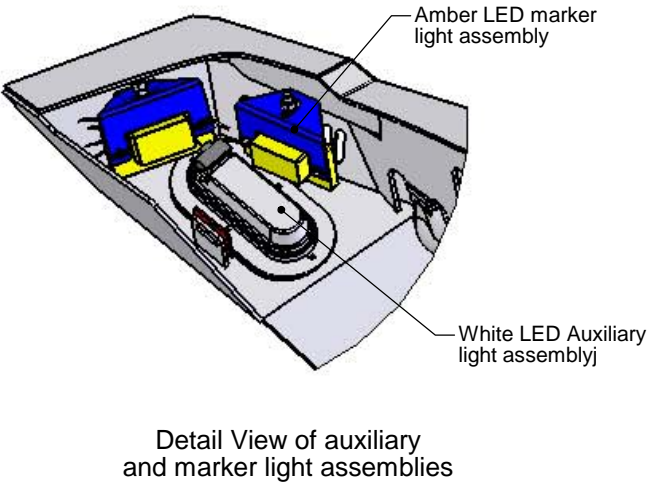
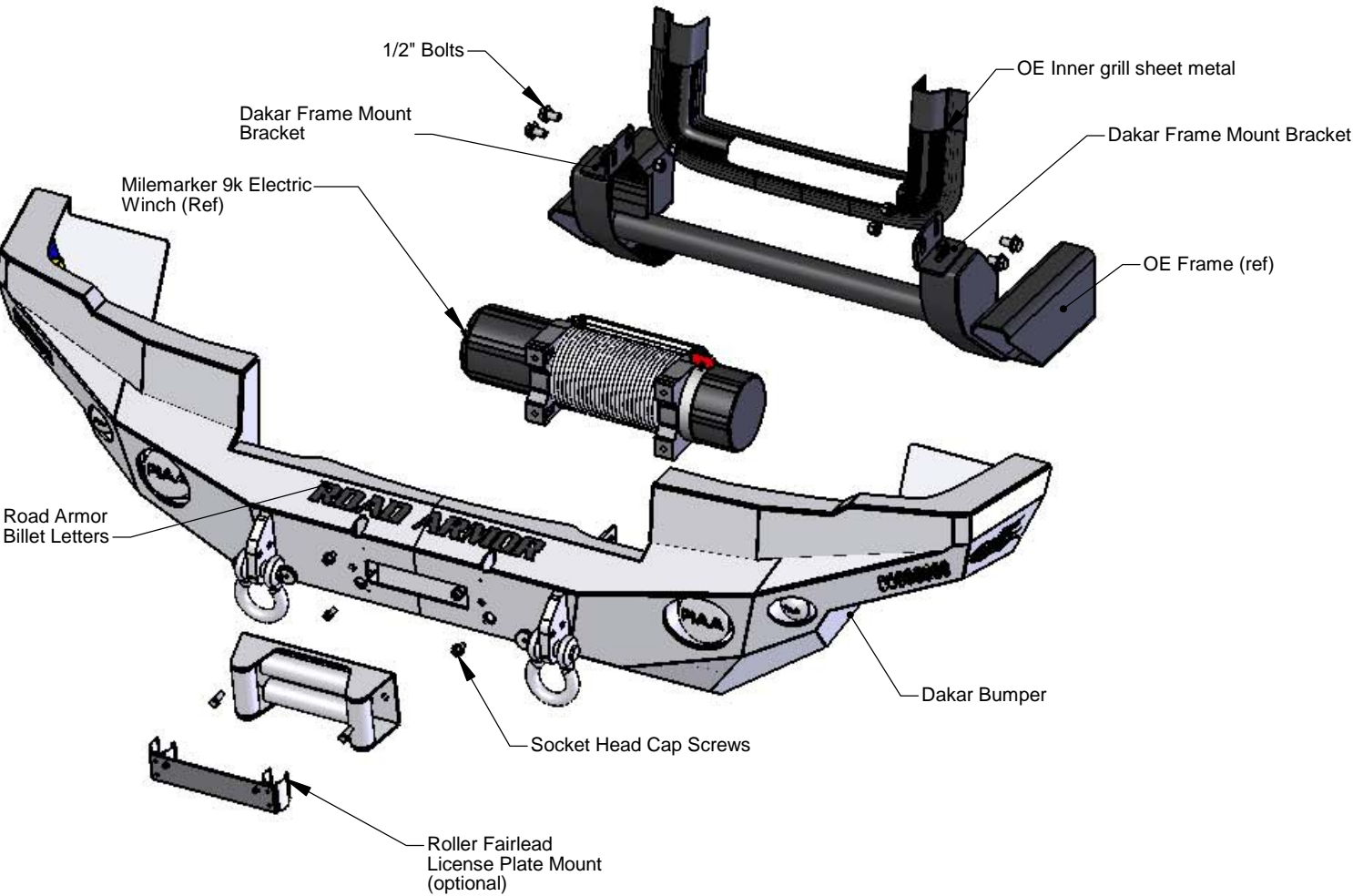



GENERAL NOTES:

Parts List:
1 ea. Dakar Front Winch Mount Bumper
1 ea. Pass/Driver Frame Mount Bracket
4 ea. 1/2-13 x 1-1/2" UNC Gr 8 Bolt
4 ea. 1/2-13 UNC Gr 8 Nut
4 ea 1/2" Gr 2 Flat Washer
4 ea 1/2" Gr 2 Lock Washers
4 ea 3/8-16 UNC Gr 8 Socket Head Cap Screws
1 ea Road Armor Billet Letters (optional colors include black, red, silver)
2 ea Road Armor Billet Logo (optional colors include black, red, silver)

Optional Accessories:
Winches: Milemarker Hydraulic, 12k lbs cap PN 70-52000C. Milemarker Electric 9k lbs cap. PN 76-50040C (12V DC)
Fog Lights: PIAA 510 Ion Crystal PN 5161
Driving Lights: PIAA 1100X Super White Driving PN 1192
Roller Fairlead License Plate Mount RA PN 2030 A
Forged 7/8" Recovery Shackle RA PN 2035S
4 Ea Amber Marker Lights PN 40450. This mounts with RA PN 2050-MLM1 Rev A
2 Ea White 6" x 2" LED Auxiliary Lights PN 83812. This mounts with RA PN 83812-LM

Road Armor Factory Approved Accessories



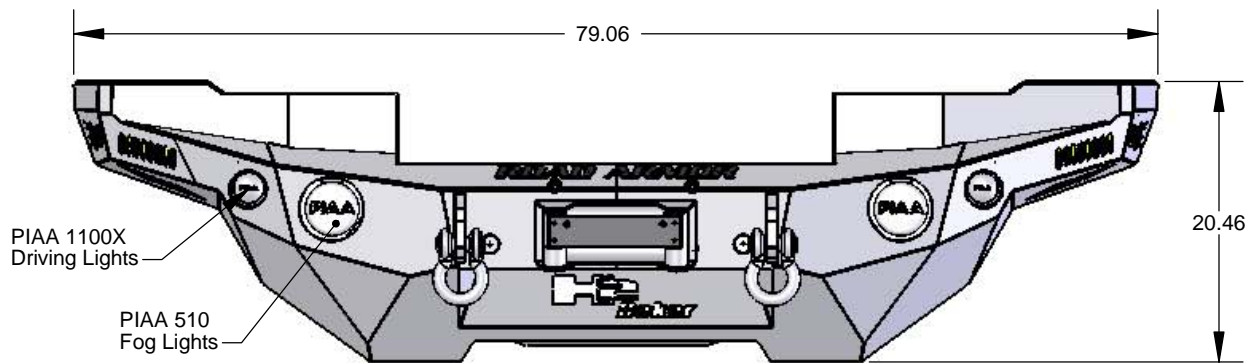
UNLESS NOTED OTHERWISE			NAME		DATE		 <div>Road Armor, LLC 10924 Mukilteo Speedway #264 Mukilteo WA 98275 (206) 510-0207</div>				
LINEAR = INCHES ANGLE = DEGREES .X ± .100 Bend ± 1.0 ° .XX ± .030 Mach ± 0.5 ° .XXX ± .005 fract. ± .030			DRAWN		J. Terry		0/00/04				
			CHECKED		H. Park		0/00/04				
			ENG APPR.		H. Park		0/00/04				
			MFG APPR.								
			Q.A.								
INTERPRET GEOMETRIC TOLERANCING PER: ANSI Y14.5			PROPRIETARY AND CONFIDENTIAL THE INFORMATION CONTAINED IN THIS DRAWING IS THE SOLE PROPERTY OF ROAD ARMOR, LLC. ANY REPRODUCTION, IN PART OR AS A WHOLE WITHOUT THE WRITTEN PERMISSION OF ROAD ARMOR IS PROHIBITED.			TITLE: H2 Dakar Front Winch Bumper Installation Instructions					
MATERIAL			SIZE						DWG. NO.		
FINISH			B			H2-10 Install			Rev -		
						SCALE: 1:4			lbs		

SPECIFICATIONS:

Product Name: Road Armor Dakar Hidden Winch Mount Front End Replacement PN H2-10
Application: '02+ General Motors Hummer H2
Material: Primary structure 3/16" H.R. P&O A36 Descaled Steel. Recovery pionts 3/4" H.R. P&O A36 Descaled Steel
Weight: 115 Lbs.
Construction: Laser cut, press brake formed, mig welded.
Finish: All exterior welds smoothed and polished by hand. All surfaces acid etched and powder coated 4 mills thick.
Color: Standard Satin Black, custom colors per order
Hidden Winch Style Capacity: Up to 12,000 winch. Minor inner grill trimming required.
Vehicle Mounting: Four point solid connection to OE frame. No frame modifications required.
OE Safety Compliant: Air bag comptible, crumple zone compliant.
Skid Plating: Front end full wrap skid plating.
Accessories: Recessed driving and fog light mounts, side marker light grills/mounts, downward auxillary light grills/mounts.

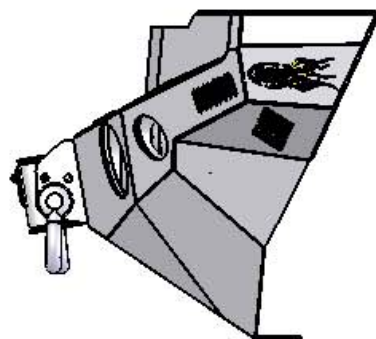


TOP VIEW

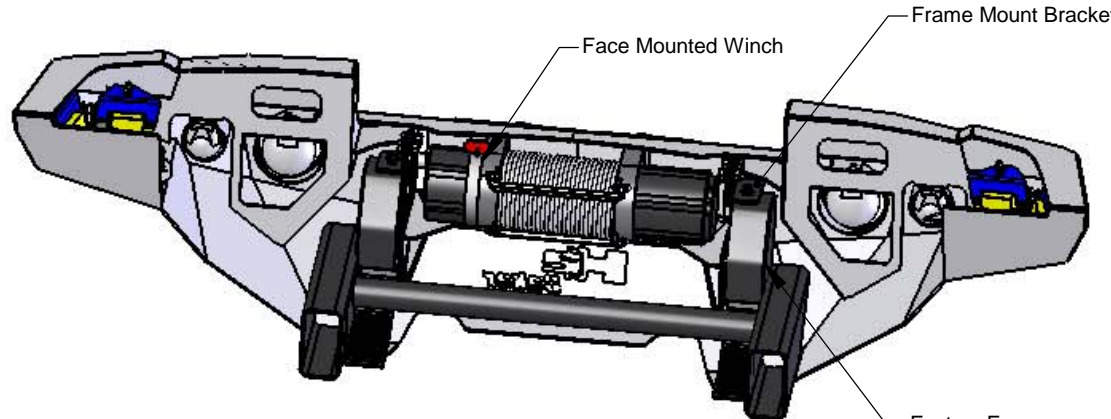
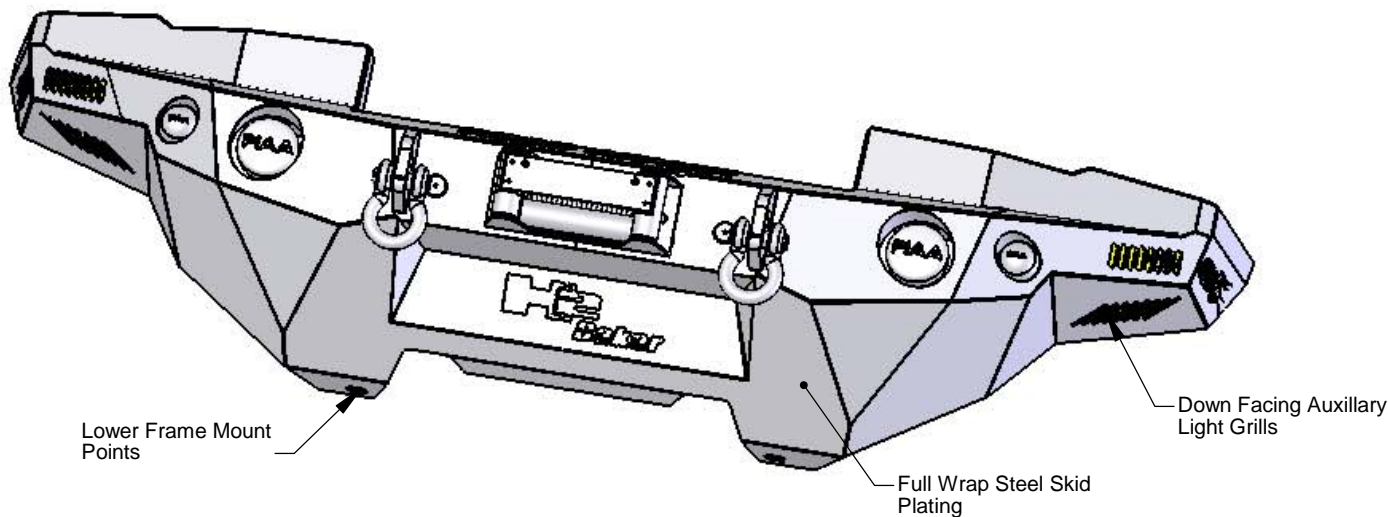


FRONT VIEW

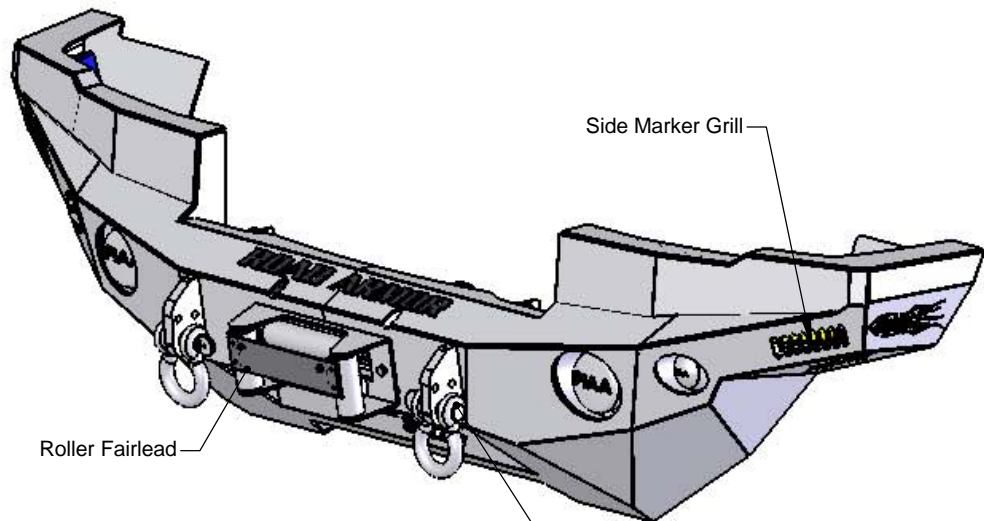
Dakar "Dry" Weight 115 Lbs



SIDE VIEW



REAR ISO VIEW



FRONT ISO VIEW

UNLESS NOTED OTHERWISE

LINEAR = INCHES ANGLE = DEGREES
.X ± .100 Bend ± 1.0°
.XX ± .030 Mach ± 0.5°
.XXX ± .005
fract. ± .030

INTERPRET GEOMETRIC TOLERANCING PER:
ANSI Y14.5

MATERIAL

FINISH

	NAME	DATE
DRAWN	J. Terry	0/00/04
CHECKED	H. Park	0/00/04
ENG APPR.	H. Park	0/00/04
MFG APPR.		
Q.A.		

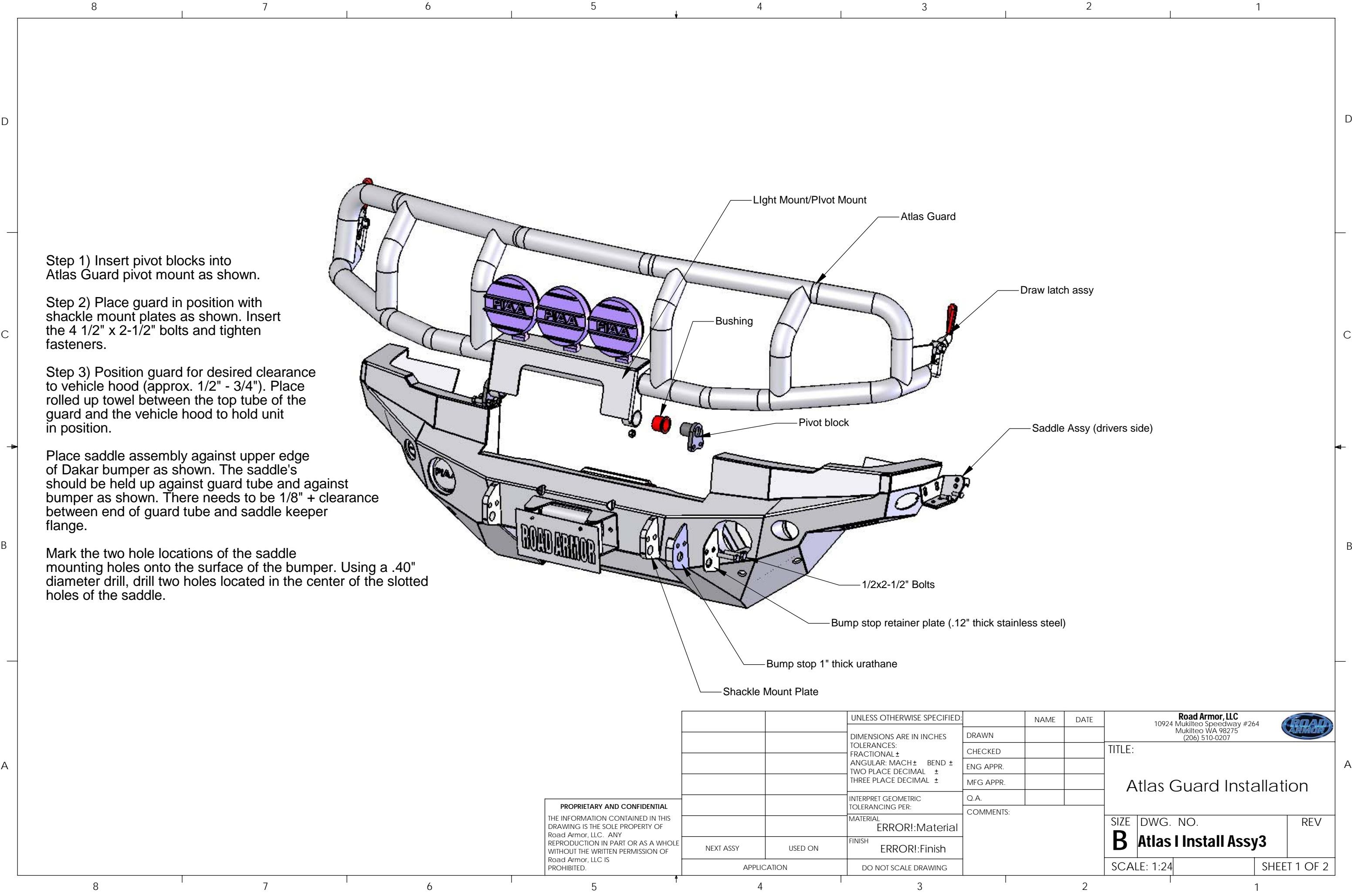
PROPRIETARY AND CONFIDENTIAL
THE INFORMATION CONTAINED IN THIS
DRAWING IS THE SOLE PROPERTY OF
ROAD ARMOR, LLC. ANY REPRODUCTION,
IN PART OR AS A WHOLE WITHOUT THE
WRITTEN PERMISSION OF ROAD ARMOR
IS PROHIBITED.



Road Armor, LLC
10924 Mukilteo Speedway #264
Mukilteo WA 98275
(206) 510-0207

H2 Dakar Front Winch
Bumper Installation Instructions

SIZE	DWG. NO.	Rev -
B	H2-10 Install	
SCALE: 1:4	lbs	SHEET 2 OF 3



Step 1) Insert pivot blocks into Atlas Guard pivot mount as shown.


Step 2) Place guard in position with shackle mount plates as shown. Insert the 4 1/2" x 2-1/2" bolts and tighten fasteners.

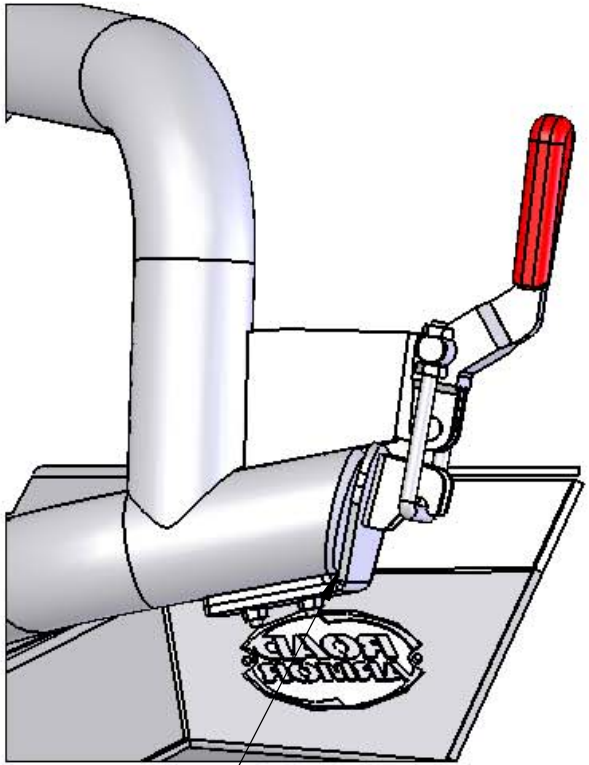
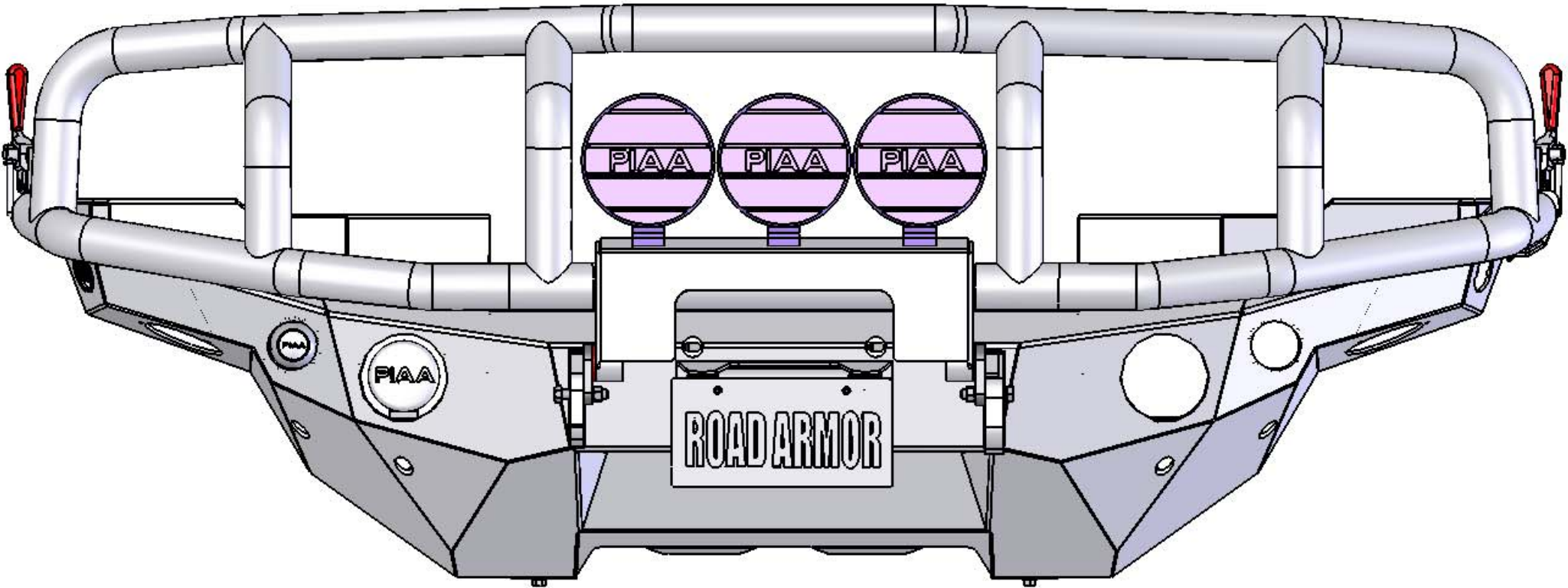
Step 3) Position guard for desired clearance to vehicle hood (approx. 1/2" - 3/4"). Place rolled up towel between the top tube of the guard and the vehicle hood to hold unit in position.

Place saddle assembly against upper edge of Dakar bumper as shown. The saddle's should be held up against guard tube and against bumper as shown. There needs to be 1/8" + clearance between end of guard tube and saddle keeper flange.

Mark the two hole locations of the saddle mounting holes onto the surface of the bumper. Using a .40" diameter drill, drill two holes located in the center of the slotted holes of the saddle.


PROPRIETARY AND CONFIDENTIAL
THE INFORMATION CONTAINED IN THIS DRAWING IS THE SOLE PROPERTY OF Road Armor, LLC. ANY REPRODUCTION IN PART OR AS A WHOLE WITHOUT THE WRITTEN PERMISSION OF Road Armor, LLC IS PROHIBITED.

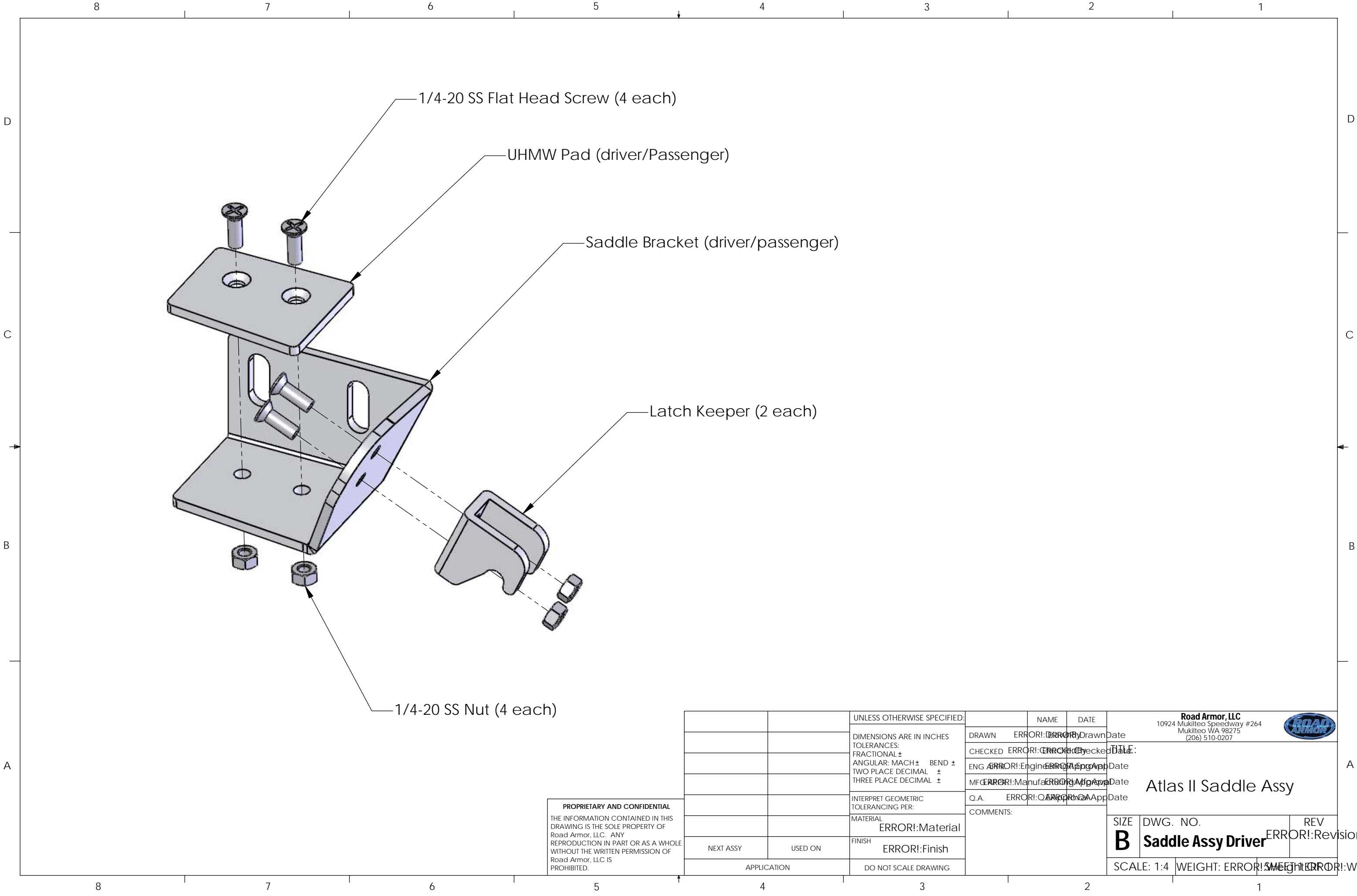
		UNLESS OTHERWISE SPECIFIED:		NAME	DATE	Road Armor, LLC 10924 Mukilteo Speedway #264 Mukilteo WA 98275 (206) 510-0207			
		DIMENSIONS ARE IN INCHES		DRAWN					
		TOLERANCES:		CHECKED					
		FRACTIONAL ±		ENG APPR.					
		ANGULAR: MACH ± BEND ±		MFG APPR.		TITLE: Atlas Guard Installation		SIZE DWG. NO. REV	
		TWO PLACE DECIMAL ±		Q.A.					
		THREE PLACE DECIMAL ±		COMMENTS:					
		INTERPRET GEOMETRIC TOLERANCING PER:		NEXT ASSY USED ON APPLICATION		B Atlas I Install Assy3		SCALE: 1:24 SHEET 1 OF 2	
		MATERIAL	ERROR!:Material						
		FINISH	ERROR!:Finish						
		DO NOT SCALE DRAWING							




Set gap between
end of tube and saddle
keeper mount flange

PROPRIETARY AND CONFIDENTIAL
THE INFORMATION CONTAINED IN THIS
DRAWING IS THE SOLE PROPERTY OF
Road Armor, LLC. ANY
REPRODUCTION IN PART OR AS A WHOLE
WITHOUT THE WRITTEN PERMISSION OF
Road Armor, LLC IS
PROHIBITED.

		UNLESS OTHERWISE SPECIFIED:		NAME	DATE	Road Armor, LLC 10924 Mukilteo Speedway #264 Mukilteo WA 98275 (206) 510-0207			
		DIMENSIONS ARE IN INCHES TOLERANCES: FRACTIONAL ± ANGULAR: MACH ± BEND ± TWO PLACE DECIMAL ± THREE PLACE DECIMAL ±	DRAWN			TITLE: Atlas Guard Installation			
			CHECKED						
			ENG APPR.						
			MFG APPR.						
		INTERPRET GEOMETRIC TOLERANCING PER:	Q.A.			SIZE DWG. NO. REV B Atlas I Install Assy3			
		MATERIAL ERROR!::Material	COMMENTS:						
		FINISH ERROR!::Finish							
NEXT ASSY	USED ON					SCALE: 1:24		SHEET 2 OF 2	
APPLICATION		DO NOT SCALE DRAWING							



PROPRIETARY AND CONFIDENTIAL
THE INFORMATION CONTAINED IN THIS
DRAWING IS THE SOLE PROPERTY OF
Road Armor, LLC. ANY
REPRODUCTION IN PART OR AS A WHOLE
WITHOUT THE WRITTEN PERMISSION OF
Road Armor, LLC IS
PROHIBITED.

		UNLESS OTHERWISE SPECIFIED:		NAME	DATE	Road Armor, LLC 10924 Mukilteo Speedway #264 Mukilteo WA 98275 (206) 510-0207			
		DIMENSIONS ARE IN INCHES	DRAWN	ERROR!: Drawn By	DATE	TITLE: Atlas II Saddle Assy			
		TOLERANCES:	CHECKED	ERROR!: Checked By	DATE				
		FRACTIONAL ±	ENG	ERROR!: Engineering App	DATE				
		ANGULAR: MACH ± BEND ±	MFG	ERROR!: Manufacturing App	DATE				
		TWO PLACE DECIMAL ±	Q.A.	ERROR!: QA App	DATE				
		THREE PLACE DECIMAL ±	COMMENTS:			SIZE	DWG. NO.	REV	
		INTERPRET GEOMETRIC TOLERANCING PER:				B	Saddle Assy Driver	ERROR!:Revision	
		MATERIAL	ERROR!:Material						
		FINISH	ERROR!:Finish						
NEXT ASSY	USED ON					SCALE: 1:4	WEIGHT: ERROR!:Weight	WEIGHT: ERROR!:Weight	
APPLICATION		DO NOT SCALE DRAWING							

RATED #1 IN NEW CONCEPT DESIGN

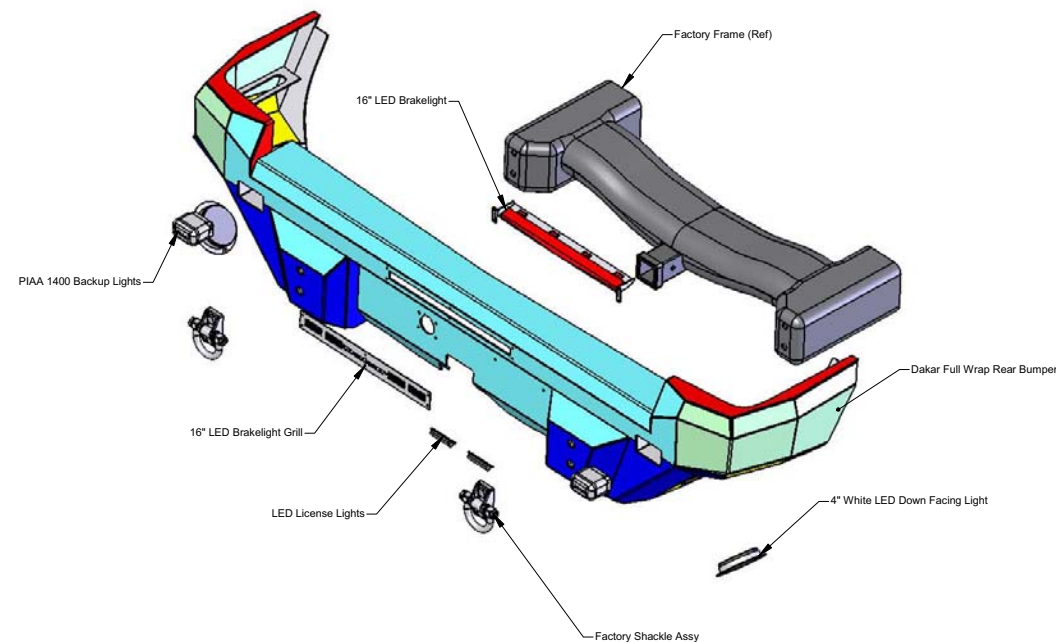


Vehicle Type: **Hummer H2** Product: **Dakar Rear Bumper**
'02+ SUV/'04+ SUT Base, Adventure, LUX

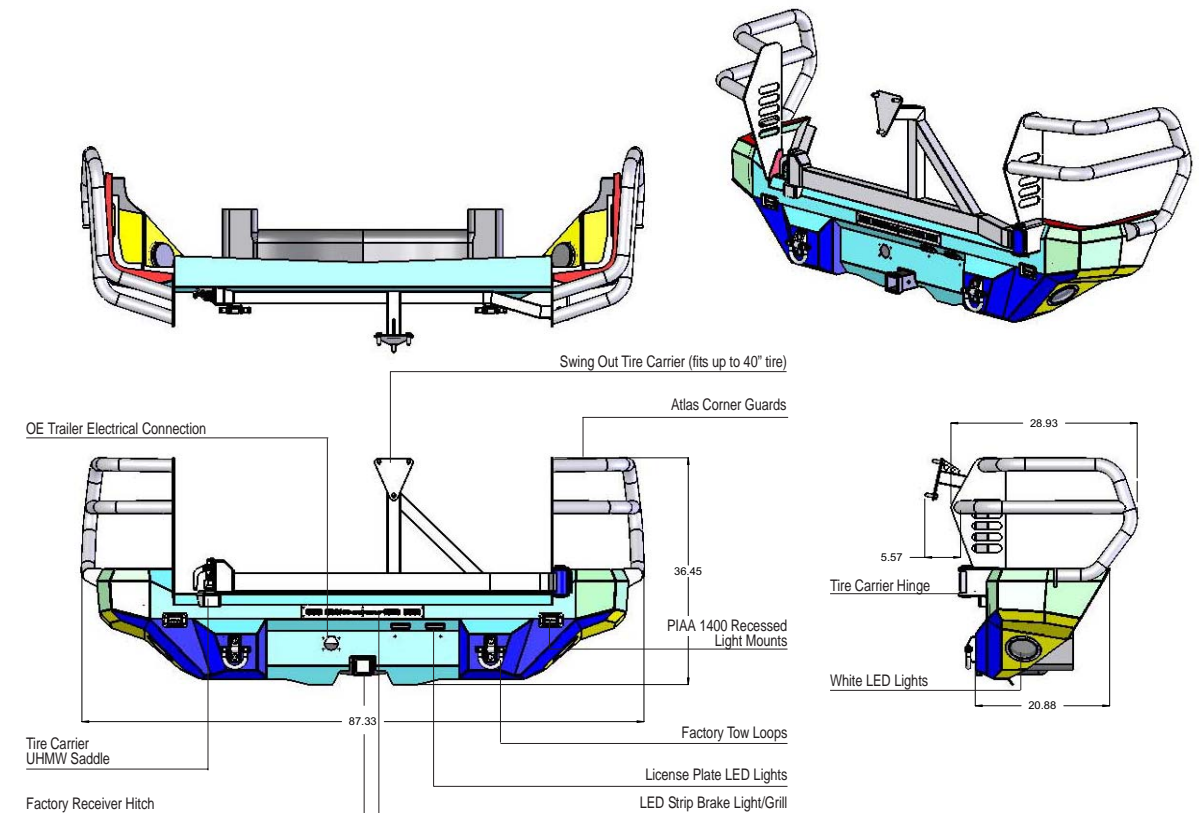
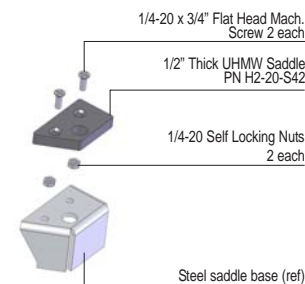
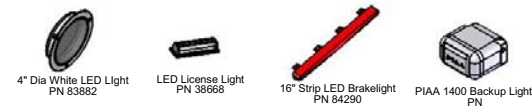
GENERAL NOTES:

Parts List (base bumper)
1 Ea Dakar Full Wrap Rear Bumper
1 Ea 16" LED Brakelight Mount Bracket
1 Ea 16" LED Brakelight Grill Cover Plate
6 Ea 10-24 x 3/4" machine screw, Stainless Steel
6 Ea 10-24 self locking nut

Parts List (base bumper + Tire Carrier)
1 Ea UHMW Saddle
2 Ea 1/4-20 x 1/2" Flat Head Screw, Stainless Steel
2 Ea 1/4-20 self locking nut



Road Armor Factory Approved Accessories



Installation Precedure:

STEP 1) Remove all factory rear bumper components. Factory tow loops will be re-used. Remove factory rear fender flares.
STEP 2) Install all optional accessories, i.e. PIAA lights, LED lights etc. Install Tire Carrier UHMW saddle as shown
STEP 3) Position bumper up to vehicle. Carefully move bumper into position around the factory quarter panels and align mounting holes with factory tow loop holes in frame. Place factory tow loops in position on rear face of bumper and thread bolts into frame holes. Position bumper square to vehicle and tighten bolts securely.
STEP 4) Wire lights as necessary.



KEY FEATURES:

The Dakar is the newest Road Armor advanced design concept to match the rectangular lines of the H2. It features high angle faceted design for exceptional strength to weight.

Fit up to body is exact - "Corner Pods" wrap completely around quarter panels for full protection.

Options Include: Swing out tire carrier for up to 40" dia tires, Corner Guards fully protect quarter panels.

SPECIFICATIONS:

Product Name: Dakar full wrap rear replacement - Base PN: H2-20
Application: '02+ H2 SUT/'04+ H2 SUT
Bumper Material: Primary structure 3/16" H.R. descaled A36 steel. Recovery mounts 3/16" H.R. descaled A36 steel
Guard Material: 2" dia x .120" tube A 513 FC .010"
Steel Plate Construction : CNC laser cut, CNC press brake formed, robotically welded
Guard Construction: CNC mandrel formed, mig welded
Finish: All exterior seams machine ground and polished, acid etched powder coat baked on 4 mill thick satin black
Mounting: Solid four point bolted connection, mounts using factory tow loops.
OE Safety Compliancy: Air bag compatible, crumple zone compliant
Skid Plating: Full wrap style
Accessories: Recessed rectangular light mounts PIAA Ion Crystal Fog PN 1451
Weight: Dakar base bumper - 110 lbs, Dakar + Atlas Corner Gaurds 150 Lbs, Dakar + Tire Carrier 155 Lbs